

# See the Difference

## In The Value of a ComfortSeries™ Walk-in Tub

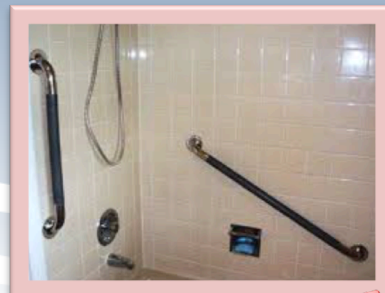


Functional & Stylish, anyone can use the bathroom

vs



Institutional, limits accessibility to others who want to use bathroom



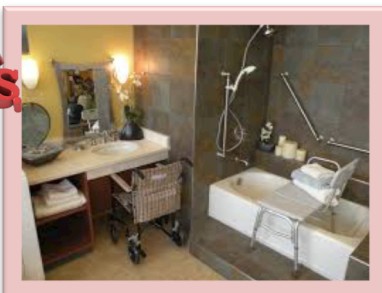
Handshower is hard to reach

vs

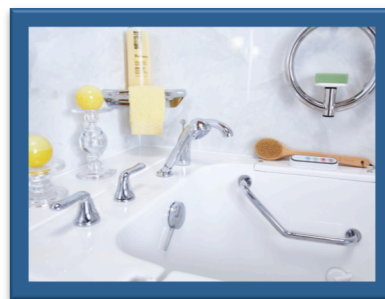


Fully accessible, Barrier-free slide-in & out tub

vs



Not barrier-free, water overspray will pool on floor, must step over tub



Faucet, drain, safety bars & controls are easy to reach

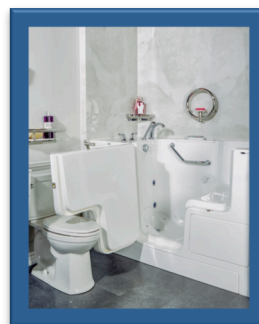


Trip Hazard from edge, no soaking available, bather must stand or use chair

vs



Full access to tub seat, with soaking and 44 therapeutic jets

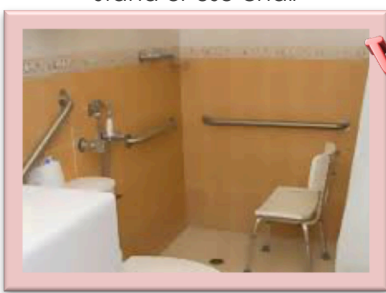


Even in tight spaces, the door opens wide over a right height toilet

vs



Seat is on opposite side of shower, glass doors are barriers

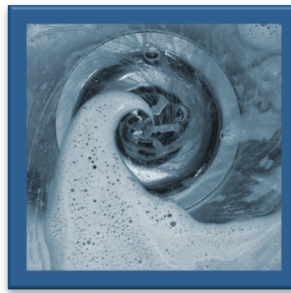


Still a forward/sideways fall hazard, faucets can be hard to reach

vs



Bather is fully contained; faucet, handshower & tub controls all are within reach



QuickDrain® Fast Water Removal System drains all water 8 times faster, and in less than 2 min.

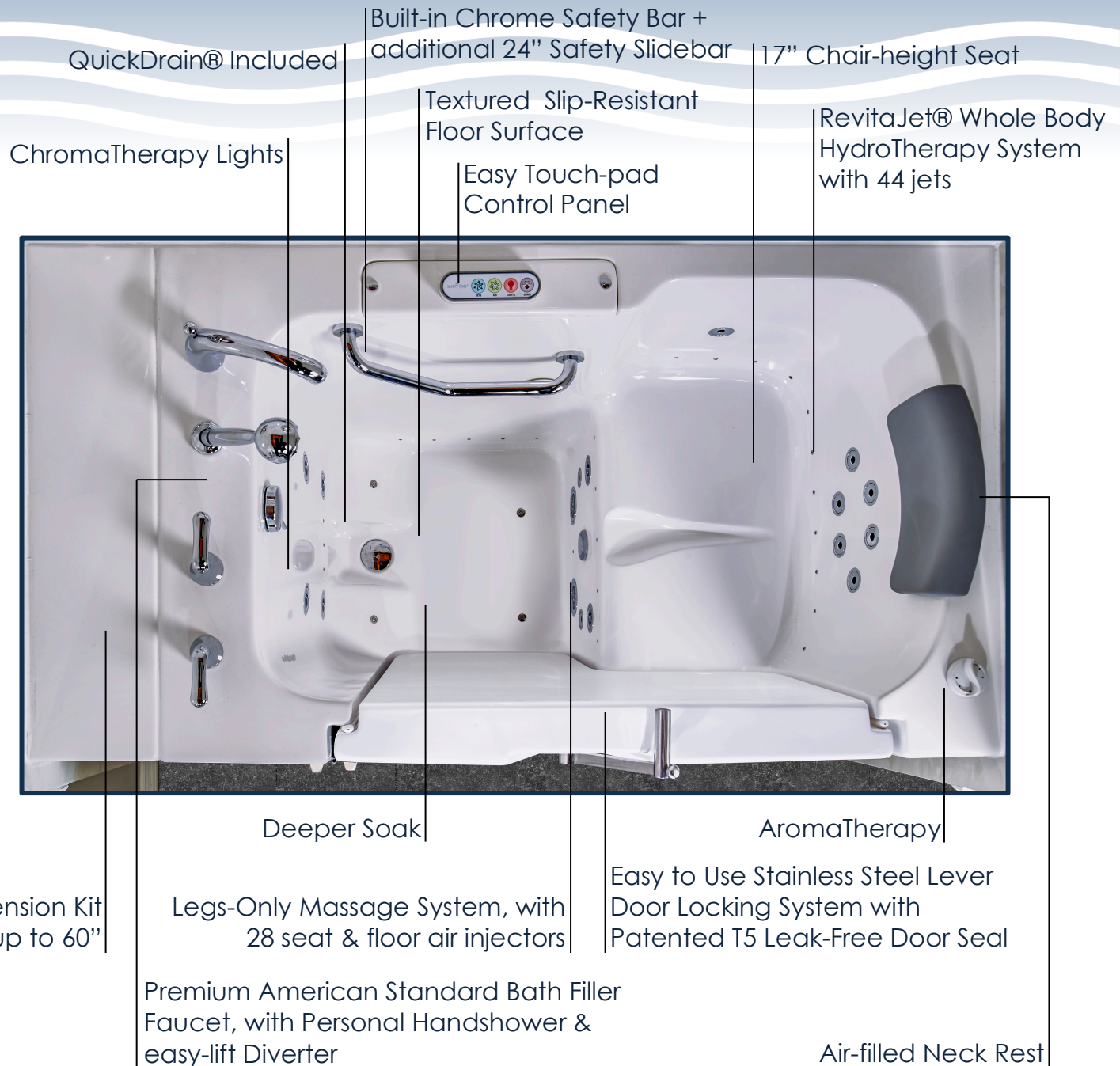
vs



Regular drain may cause bather to cool too quickly, causing discomfort

Can you see the Safer, more Comfortable Choice?

# Imagine the Difference in Your Bathroom



## Additional Features

- Easy access with a low entry-way
- Inline Heater allows you to maintain your water temperature
- Automatic Purge System that drains residual water from air system
- Mold & Bacteria Resistant
- Ozone Sanitary System—200 times better cleaning power than bleach
- QuickDrain® Fast Water Removal System drains all water 8 times faster than conventional drains, and in less than 2 minutes.
- Free-standing metal support frame with 5 adjustable leveling feet
- Lifetime Warranty on bathtub, included faucet, and the Installation by The Walkin Tub Company

ComfortSeries™ by

*American Standard*