



*The American Standard 48" x 28" ComfortSeries™ walk-in bath provides a similar bathing experience to larger models but fits in smaller spaces and uses less water. The included tub extender allows this tub to retrofit in the same space as a standard bathtub. The full sized, contoured door with a low door threshold allows ease of entry and exit.*

*Fully equipped, the ComfortSeries™ offers all the latest in safety and comfort features with the most advanced therapeutic options and backed by a LIFETIME warranty on the door seal, tub + components, and on installation by preferred installers.*

### Whirlpool Massage



A soothing and invigorating water jet massage system, the Whirlpool massage features an in-line heater, an automatic tub cleaning system and Legs-Only massage. Customize back and leg muscle therapies with 16 different water jets. The Whirlpool Spa is combined with all of the features of the Soaker Tub providing an enhanced therapeutic bathing experience.

### Air Spa Massage



Experience a soft and caressing all-over body massage powered by a variable speed heated blower that releases thousands of air bubbles rising throughout the water from 28 different air jets. The automatic purge cycle helps keep the system running efficient and clean. The Air Spa is combined with all of the features of the Soaker Tub providing an enhanced therapeutic bathing experience.

### Combination System



Combines all of the features of the Soaker Tub, the Whirlpool Massage and the Air Spa Systems, plus a multi-colored Chromatherapy light system for the ultimate therapeutic bathing experience.

### Quick Drain® System



Spend less time waiting with this patented innovation that requires no additional plumbing. Once activated it rapidly pumps the water out from within the tub—making it safe to open the door and exit the tub. Included.

# SSD4828 COMFORTSERIES™ 48" X 28" WALK-IN BATH

## SSD4828 Combination System

**RevitaJet™ Whole Body Hydrotherapy System with Air Spa and Water Jets for the ultimate therapeutic bathing experience:**

- Available in White only, and in left hand or right hand Door/Drain Configuration
- Watertight door system with a Lifetime Warranty of the door seal
- Built-in 17" chair-height seat
- Chrome trim and cable -driven waste and overflow
- Built-in colour-matched safety bar and textured tub floor
- Cushioned neckrest
- Patented QuickDrain® fast water removal system
- Premium fast-fill tub faucet and handheld showering wand
- Tub Extender Kit to fill 60" space

## Air Spa System

- Variable speed heated blower
- 28 seat and floor air injectors
- Automatic purge cycle

## Water Jet System

- Multi-colored Chromatherapy light system positioned at the bottom of the bath that creates a peaceful bathing experience
- Whirlpool in-line heater
- 16 massage jets with variable flow
- Legs-only massage
- Self-cleaning Ozone sanitation system

*Lifetime Warranty on walk-in bath, components, door seal, and installation by preferred installer*



Products with the Arthritis Foundation's Ease of Use™ Commendation are tested and proven to make daily tasks easier. Learn more at [arthritis.org/easeofuse](http://arthritis.org/easeofuse).

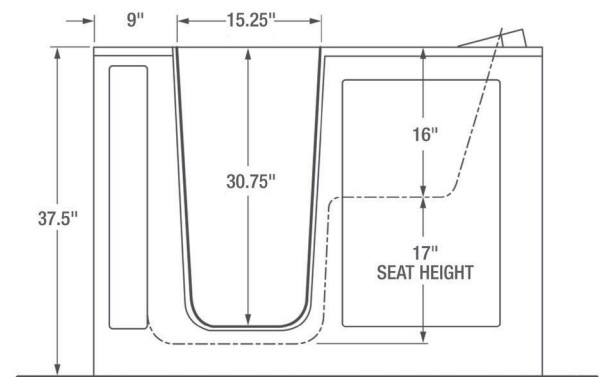
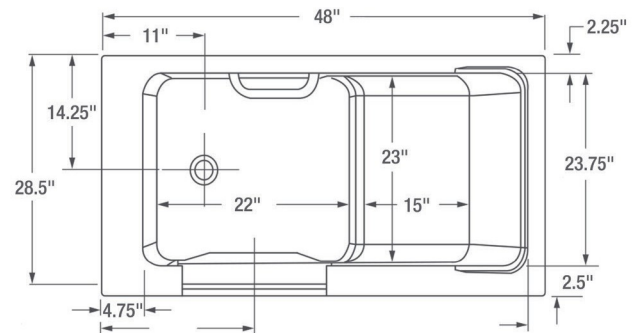
**Notes:** The whirlpool heater is designed to maintain water temperature during operation. It will not heat cold water to desired bathing temperature. Tub is supported by the frame and five integrated adjustable feet, no additional support required. Refer to installation instructions supplied with tub for additional information. Provide suitable reinforcement to sub floor for all supports.

**Our products are in compliance with the following codes:** Uniform Plumbing Code UPC®; National Plumbing Code of Canada; International Plumbing Code IPC®

**Our products conform to the following standards:** ASME A112.19.7, ASME A112.19.15; CSA B45, CSA B45.5; CSA C22.2 No. 218.2; UL-1795; ANSI Z124.1.2

**Our products are listed with:** c ETL us

**IMPORTANT:** Dimensions of fixtures are nominal, may vary and are subject to change or cancellation. No responsibility is assumed for use of superseded or voided leaflet.



## GENERAL SPECIFICATIONS FOR SSD4828 WALK-IN BATHTUB

INSTALLED SIZE	48 x 28 x 38 In. (1219 x 711 x 965mm)
WEIGHT	150 Lbs. (68 Kg.)
WEIGHT w/WATER	528 Lbs. (238 Kg.)
OPERATING GALLON	45 Gal. (170 L.)
FLOOR LOADING	56 Lbs./Sq. Ft. (275 Kgs/Sq. m.) (PROJECTED AREA)
CUBE (FT³)	28.8

## To Be Specified - Required:

- ☐ Drain Configuration: Left (CLD) or Right (CRD)
- ☐ Color: White (W) only

